

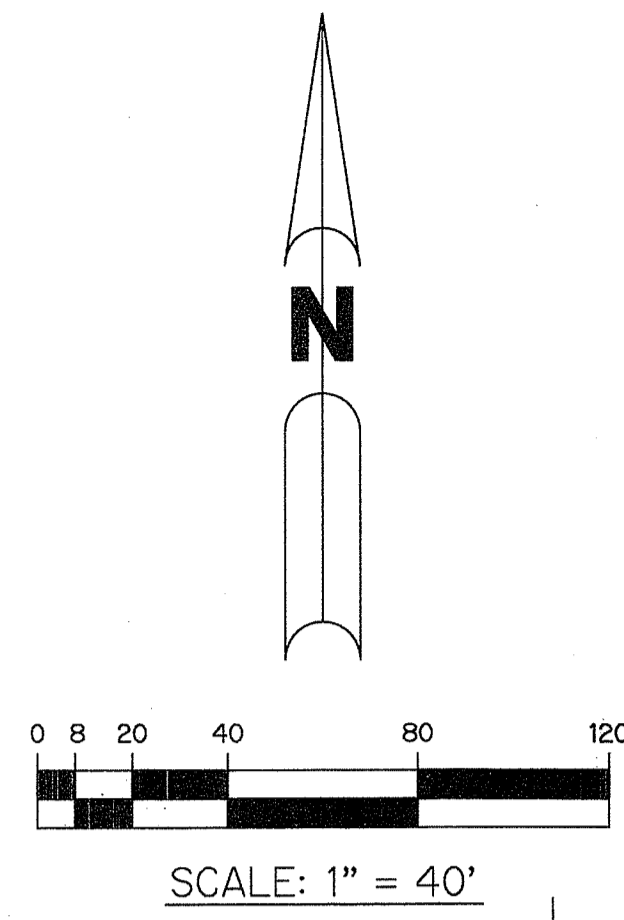
# HYDER AGR-P.U.D. - PLAT SEVEN

BEING A REPLAT OF ALL OF TRACT "C", ACCORDING TO THE PLAT OF HYDER AGR-P.U.D. - PLAT SIX AS RECORDED IN PLAT BOOK 121, PAGES 24 THROUGH 39, PUBLIC RECORDS, PALM BEACH COUNTY, FLORIDA, LYING WITHIN SECTION 30, TOWNSHIP 46 SOUTH, RANGE 42 EAST, PALM BEACH COUNTY, FLORIDA

SHEET 5 OF 7

THIS INSTRUMENT PREPARED BY  
PERRY C. WHITE, P.S.M. 4213, STATE OF FLORIDA  
SAND & HILLS SURVEYING, INC.  
8461 LAKE WORTH ROAD, SUITE 410  
LAKE WORTH, FLORIDA 33467  
LB-7741

# 188



24  
19  
25  
30

NORTHWEST CORNER OF SECTION 30-46-42 POSITION CALCULATED FROM PALM BEACH COUNTY PUBLISHED DATA N 765956.53 E 916585.83

90.00' L.W.D.D. RIGHT-OF-WAY (D.B. 118, PG. 518)

EAST R/W LINE OF STATE ROAD NO. 7 PER O.R.B. 6813, PG. 1945 (EXISTING GUARDRAIL)

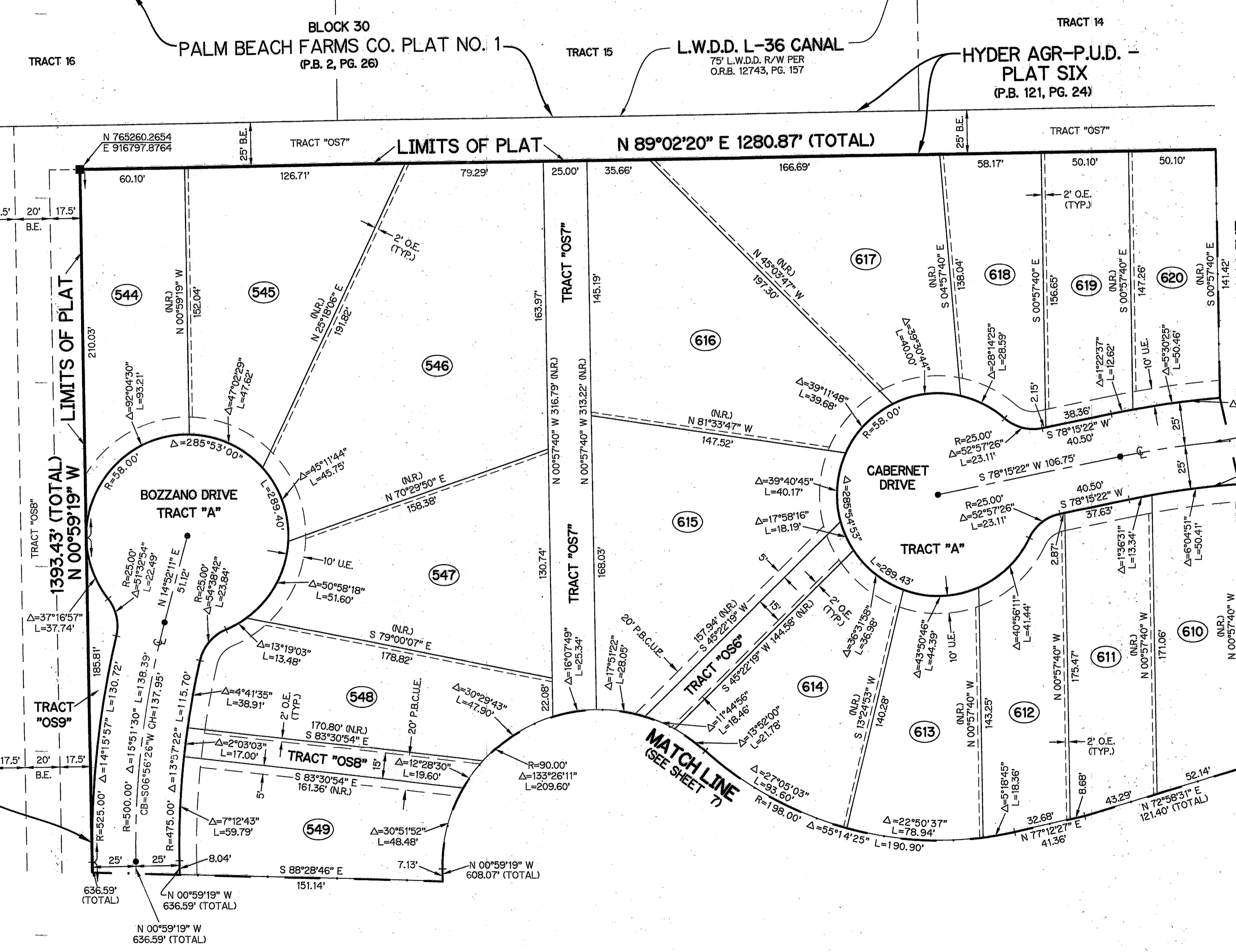
STATE ROAD NO. 7 (U.S. 441)  
PER P.O.T. R/W PROJECT SU-475-2021, MAP NO. 93210-2515, DATED: 11-03-97

S 00°59'19" E 6412.60' (TOTAL)  
WEST LINE OF SECTION 30-46-42

BLOCK 30  
PALM BEACH FARMS CO. PLAT NO. 1  
(P.B. 2, PG. 26)

L.W.D.D. E-1 CANAL  
EAST LINE OF EXISTING L.W.D.D. E-1 CANAL R/W

HYDER AGR-P.U.D. - PLAT SIX  
(P.B. 121, PG. 24)



- LEGEND:**
- - SET PERMANENT REFERENCE MONUMENT 4"x4" CONCRETE MONUMENT WITH 1.5" DISK STAMPED L.B. #7741
  - - SET MAGNETIC NAIL AND DISK IN CONCRETE 1.5" DISK STAMPED L.B. #7741
  - - SET PERMANENT CONTROL POINT NAIL WITH 1.25" DISK STAMPED L.B. #7741
  - - FOUND PERMANENT CONTROL POINT NAIL WITH 1.25" DISK STAMPED L.B. #7741
  - AGR - AGRICULTURAL
  - Δ - DELTA ANGLE
  - B.E. - BUFFER EASEMENT
  - CB - CHORD BEARING
  - CH - CHORD DISTANCE
  - C - CENTERLINE
  - D.B. - DEED BOOK
  - D.E. - DRAINAGE EASEMENT
  - F.P.L. - FLORIDA POWER & LIGHT
  - L - ARC LENGTH
  - L.A.E. - LIMITED ACCESS EASEMENT
  - L.M.A.E. - LAKE MAINTENANCE ACCESS EASEMENT
  - L.M.E. - LAKE MAINTENANCE EASEMENT
  - L.W.D.D. - LAKE WORTH DRAINAGE DISTRICT
  - N.R. - NON-RADIAL
  - N.T.S. - NOT TO SCALE
  - O.R.B. - OFFICIAL RECORD BOOK
  - O.E. - MAINTENANCE & ROOF OVERHANG EASEMENT
  - P.B.C.U.E. - PALM BEACH COUNTY UTILITY EASEMENT
  - P.B. - PLAT BOOK
  - P.C.P. - PERMANENT CONTROL POINT
  - P.G.S. - PAGES
  - P.O.B. - POINT OF BEGINNING
  - P.O.C. - POINT OF COMMENCEMENT
  - P.R.C. - POINT OF REVERSE CURVATURE
  - P.S.M. - PROFESSIONAL SURVEYOR AND MAPPER
  - P.U.D. - PLANNED UNIT DEVELOPMENT
  - R - RADIUS
  - RAD - RADIAL
  - R.F. - RADIAL TO FRONT LINE
  - R.R. - RADIAL TO REAR LINE
  - R/W - RIGHT-OF-WAY
  - R.D. & D. - ROAD, DYKE AND DITCH RESERVATION
  - S.T. - SURVEY TIE
  - U.E. - UTILITY EASEMENT
- N 1000000.0000 - DENOTES STATE PLANE COORDINATES  
E 1000000.0000

**NOTE:**  
COORDINATES SHOWN ARE GRID COORDINATES DATUM = NAD 83 (1990 ADJUSTMENT)  
ZONE = FLORIDA EAST ZONE  
LINEAR UNIT = U.S. SURVEY FEET  
COORDINATE SYSTEM = 1983 STATE PLANE TRANSVERSE MERCATOR PROJECTION  
ALL DISTANCES ARE GROUND  
SCALE FACTOR = 1.00002237  
PLAT BEARING = GRID BEARING  
GROUND DISTANCE X SCALE FACTOR = GRID DISTANCE

